



14 Boxgrove Road, Sale, M33 6QW

£795,000

[www.jordanfishwick.co.uk](http://www.jordanfishwick.co.uk)





# Jordan fishwick

- Beautifully extended property
- Great location close to the town centre
- Large plot with big rear garden
- Council Tax Band D and EPC Rating TBC
- 4 Spacious Bedrooms
- Great school catchment area
- 3 reception rooms along with downstairs study
- Must view to truly appreciate

Nestled on the desirable Boxgrove Road in Sale, this stunning semi-detached house offers a perfect blend of charm and modern living. Originally built in the 1930s, this home has been thoughtfully designed to provide ample space for families. With three spacious reception rooms, there is plenty of room for relaxation and entertaining guests.

The property boasts four generously sized bedrooms, including a luxurious master bedroom suite that serves as a private retreat. The two well-appointed bathrooms ensure convenience for the entire household.

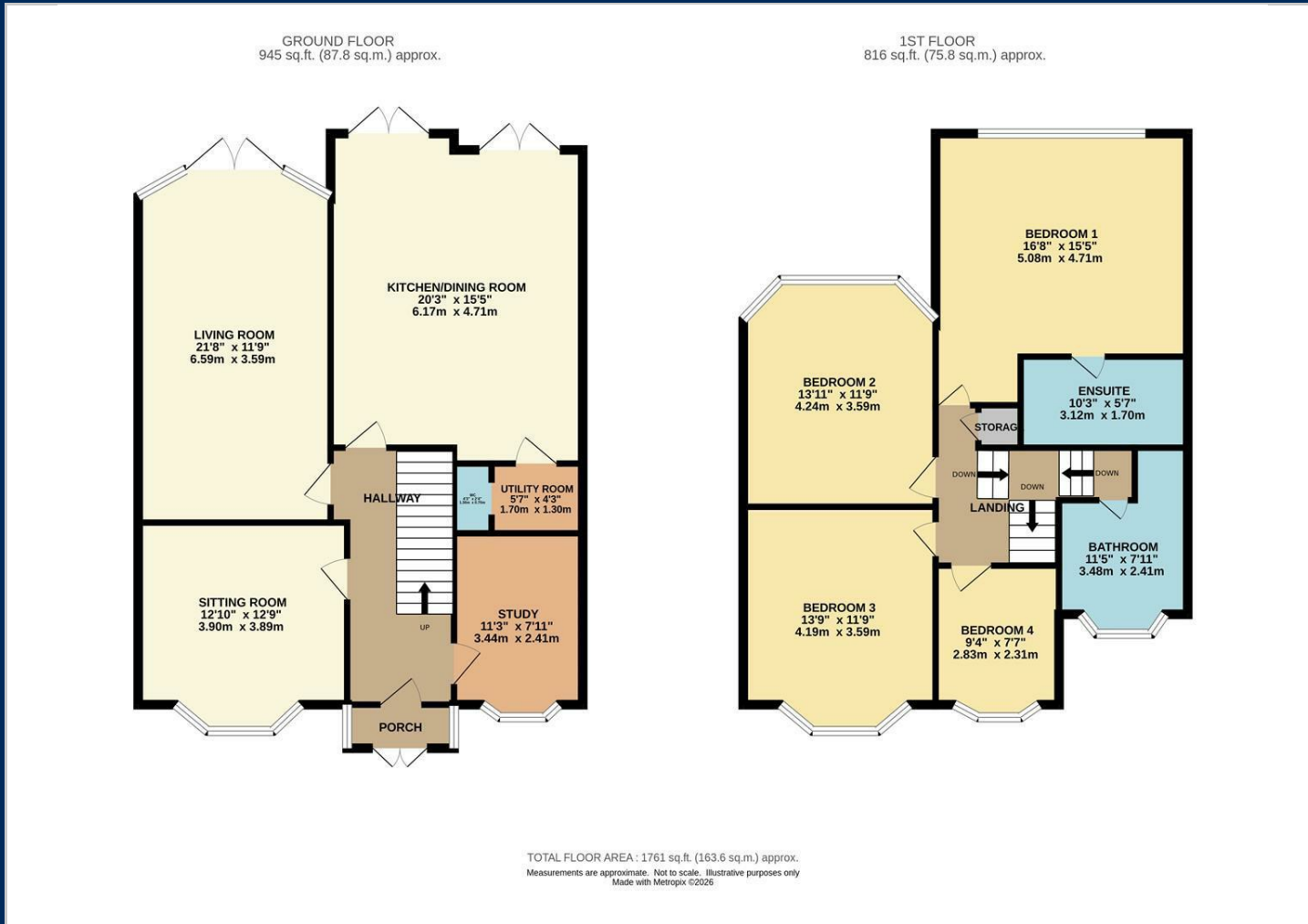
Set on a substantial plot, the large rear garden is a true highlight, providing an ideal space for outdoor activities, gardening, or simply enjoying the fresh air. The property also features parking for up to four vehicles, making it a practical choice for families or those with multiple cars.

Located in a sought-after area, this beautiful home is not to be missed. Its combination of space, style, and location makes it a perfect choice for anyone looking to settle in Sale. We highly recommend scheduling a viewing to fully appreciate all that this exceptional property has to offer.





# Floor Plans

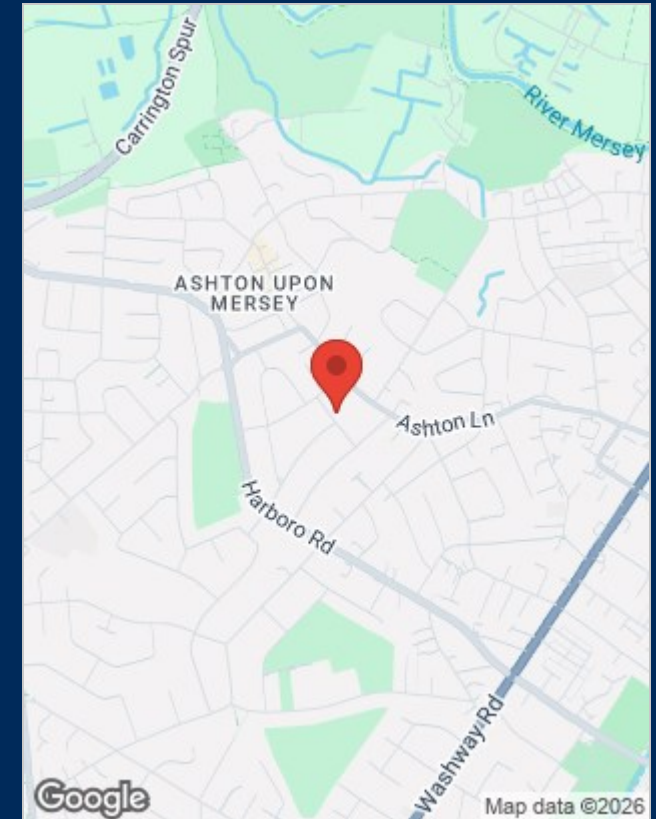


## Viewing

Please contact our Sale Office on 0161 962 2828 if you wish to arrange a viewing appointment for this property or require further information.

The particulars are set out as a general outline only for the guidance of intended purchasers or lessees, and do not constitute, any part of a contract. Nothing in these particulars shall be deemed to be a statement that the property is in good structural condition or otherwise nor that any of the services, appliances, equipment or facilities are in good working order. Purchasers should satisfy themselves of this prior to purchasing.

# Location Map



## Energy Performance Graph

